

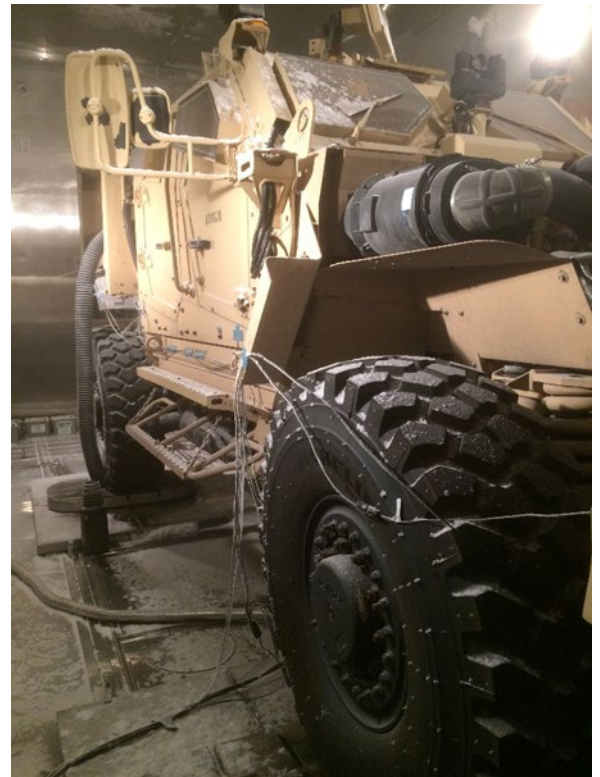


ENVIRONMENTAL CHAMBER TESTING

Combat Capabilities Development Command (CCDC) Ground Vehicle Systems Center's (GVSC) Physical Simulation Team (PST) operates three separate Environmental Chambers capable of testing components, subsystems, and full vehicles under vibration loads. Capabilities include cold starts, hot / cold soak, and thermal shock.

Vehicle Environmental Chamber

- Dimension
 - Length: 371 in (30 feet)
 - Width: 186 in (15.5 feet)
 - Height: 180 in (15 feet)
- Temperature Capability
 - Range: -50°F to 185°F
 - Humidity Range: 20% to 95%
 - Humidity Limitations: -40°F dew point at maximum dry-bulb temperature at 149°F



Full Vehicle Cold Start and Vibration



Modular Chamber for Quick Setup



ENVIRONMENTAL CHAMBER TESTING

Component Environmental Chamber

- Dimension
 - Length: 108 in
 - Width: 60 in
 - Height: 80 in
- Temperature Capability
 - Range: -65°F to 195°F
 - Humidity Range: 20% to 95%
- Maximum Payload 2000 lb



Component Cold / Hot Soak

Multi-Axial Simulation Table (MAST) Environmental Chamber

- Dimension
 - Length/Width/Height: 72x72x72 in
- Temperature Capability
 - Range: -60°F to 195°F
 - Humidity Range: 20% to 95%



MAST Chamber for MIL – STD – 810G

FOR FURTHER INFORMATION:

U.S. ARMY COMBAT CAPABILITIES
DEVELOPMENT COMMAND — GROUND
VEHICLE SYSTEMS CENTER:

<https://tardec.army.mil/>

Bryan LaRose

Bryan.c.larose.civ@mail.mil (586) 215-3376